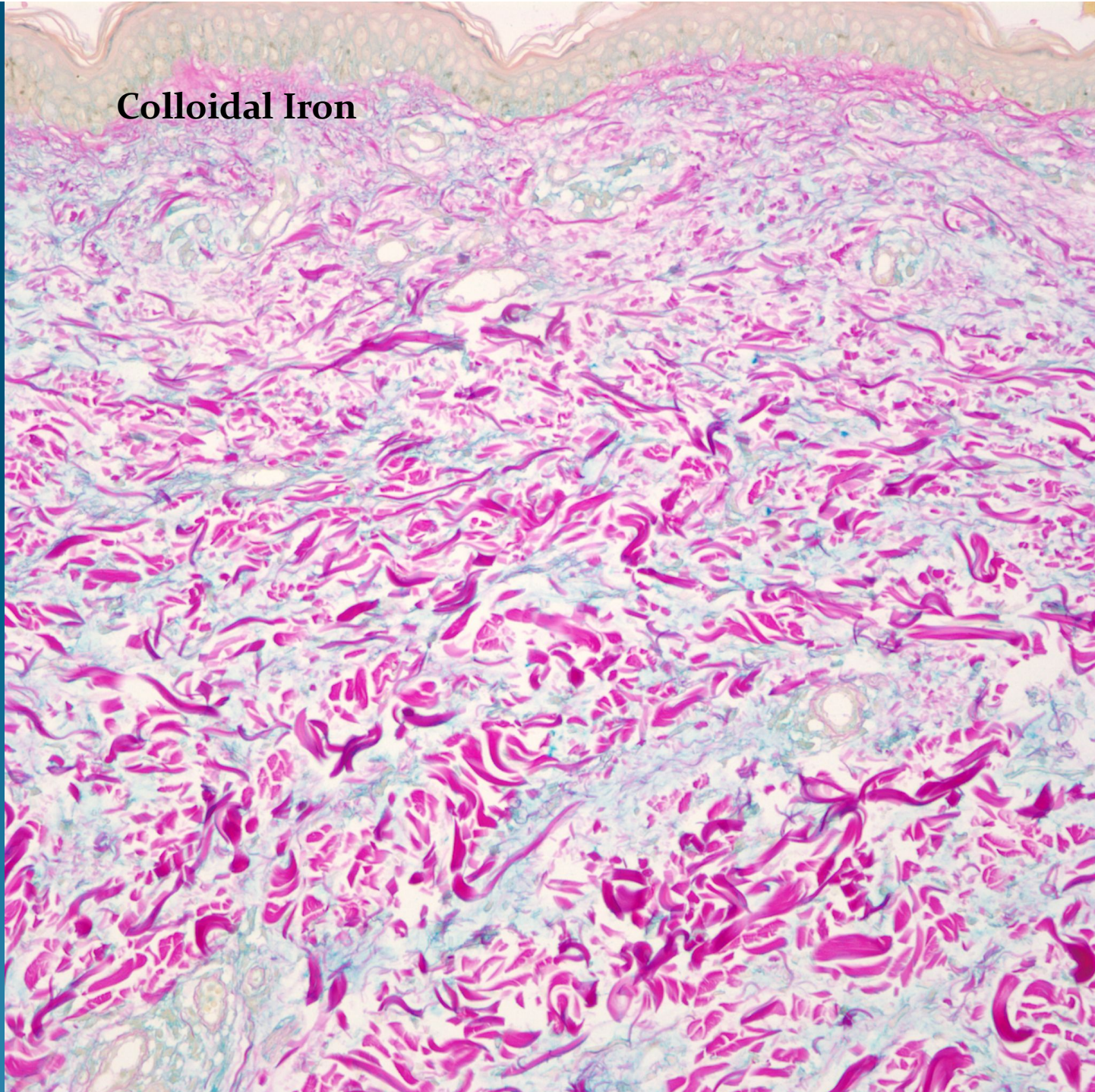


What is the best diagnosis?

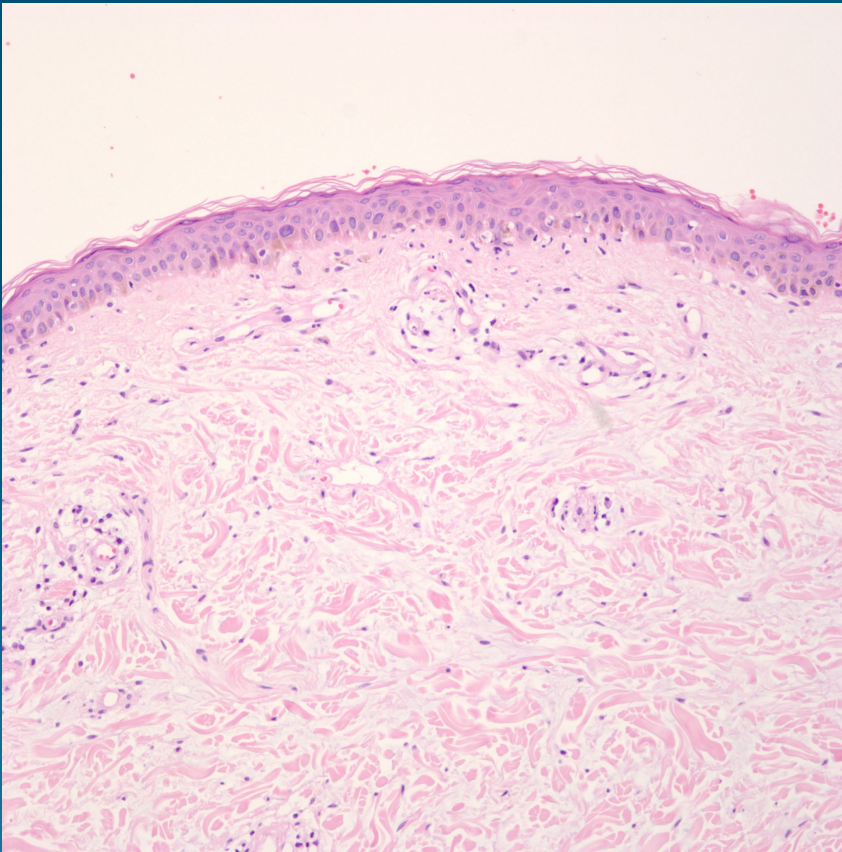
- A. Jessner's Lymphocytic Infiltrate
- B. Dermatomyositis
- C. Discoid Lupus Erythematosus
- D. Erythema chronicum migrans
- E. Dermatitis herpetiformis

Dermatomyositis

Colloidal Iron



Pearls



- Cell poor interface dermatitis
- Scant perivascular lymphocytic infiltrate
- Dermal mucinosis, confirm with mucin stains (colloidal iron, Alcian Blue/PAS)
- May need to confirm with DIF, look for deposits of membrane attack complex (C5b-9) at DE junction and endothelial cells